



Picture is a representation of actual product

The RL9000 TWM Series stainless steel weigh module is ideal for use in tank, hopper, vessel, and many other applications. The low-profile design allows for economical solutions in a competitive marketplace. This rugged, high-precision mount is designed for easy installation and does not require check rods or other stabilizing hardware. The stainless steel construction and welded seal offer additional protection in washdown areas.

## LOAD CELL CERTIFICATIONS:



## LOAD CELL SPECIFICATIONS:

Full Scale Output:	3 mv/v +/- .1%
Bridge Resistance:	350 ohms
Material/Finish:	Stainless steel*
Safe Overload:	150% F.S.
Rated Excitation:	10 V DC
Operating Temperature:	0° to 150° F
Insulation Resistance:	5000 megohms
Seal Type:	Welded seal IP 67
Cable Length:	25'
Cable Color Code:	Green ..... + Excitation Black ..... - Excitation White ..... + Signal Red ..... - Signal
Warranty:	Two-year limited

## COMPLETE KIT INCLUDES:

- 1 JB4SS NEMA 4X stainless steel signal trim junction box
- 3 or 4 HBM RTM stainless steel mounting assemblies
- 25' of our Hostile Environment EL147HE SURVIVOR® load cell cable

## APPLICATIONS:

- Tank, hopper, or vessel weighing

## STANDARD FEATURES:

- Capacities: 1000-450,000 lb
- Very low profile design
- 3 mV/V output
- Self-centering
- Self-checking assembly
- Offers 100% sideload, 100% uplift and 150% safe load and 300% ultimate overload protection
- Stainless steel construction
- Welded seal
- Weighs accurately with as much as a 3° on-parallel load
- Integral 25' cable

## OPTIONAL FEATURES:

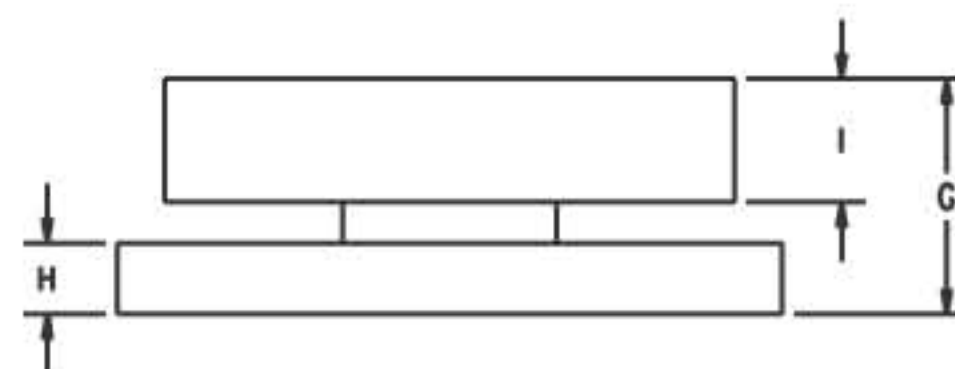
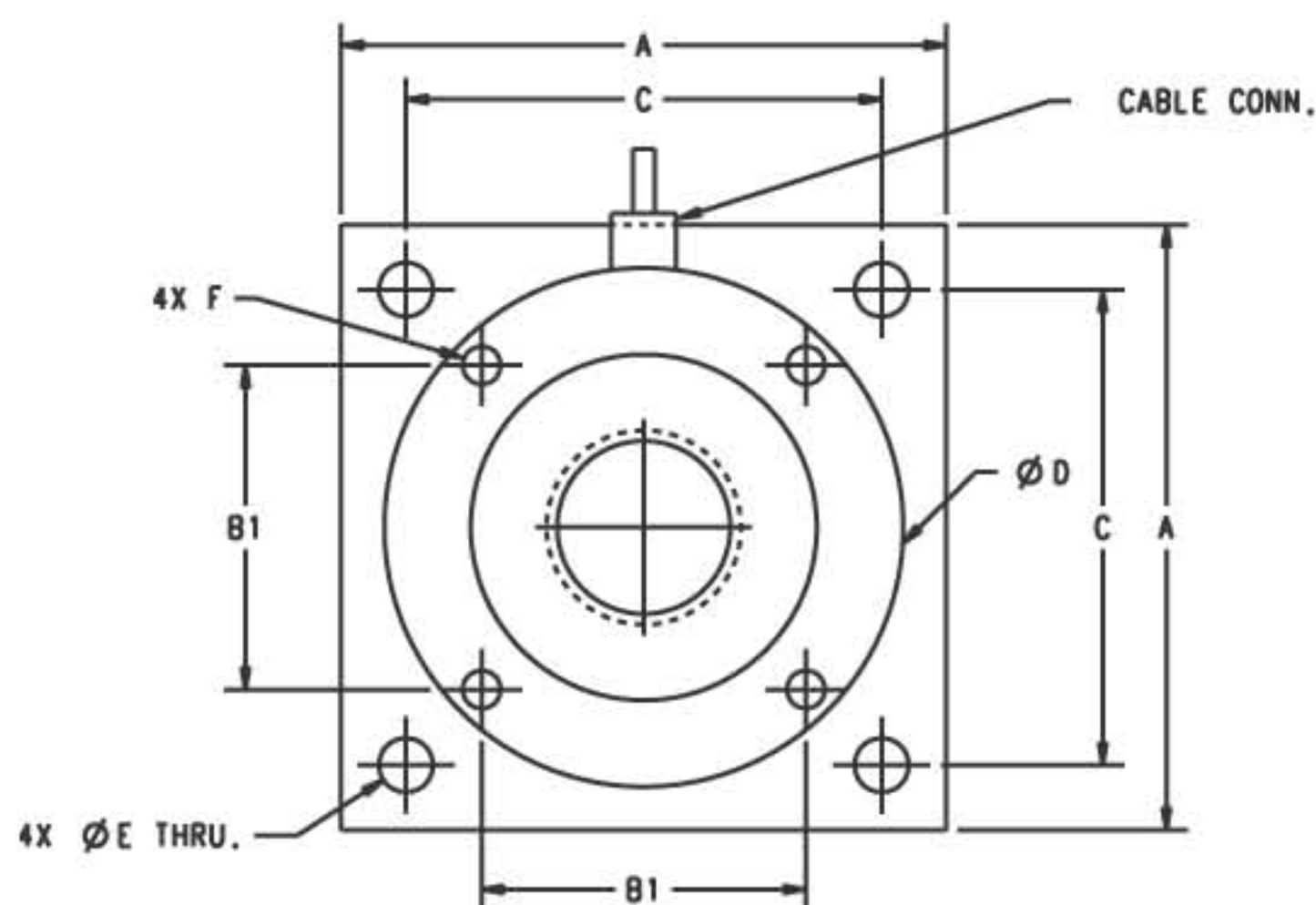
- Stainless steel top plates
- High temperature (up to 400°F) option

\*150K-450K have mild steel painted base plate

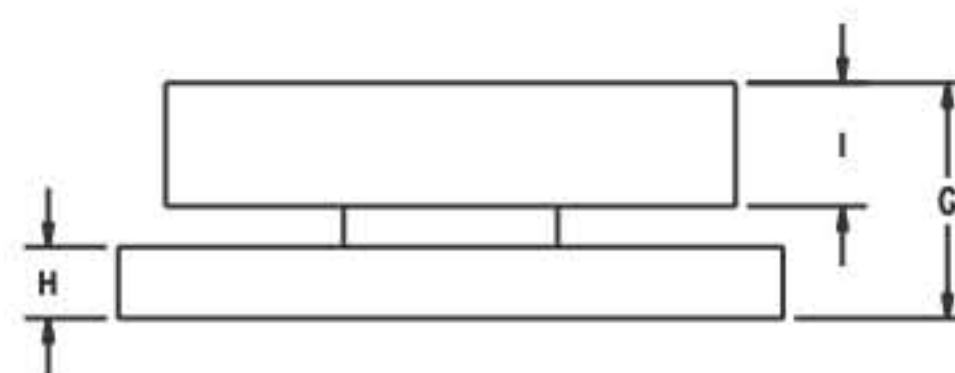
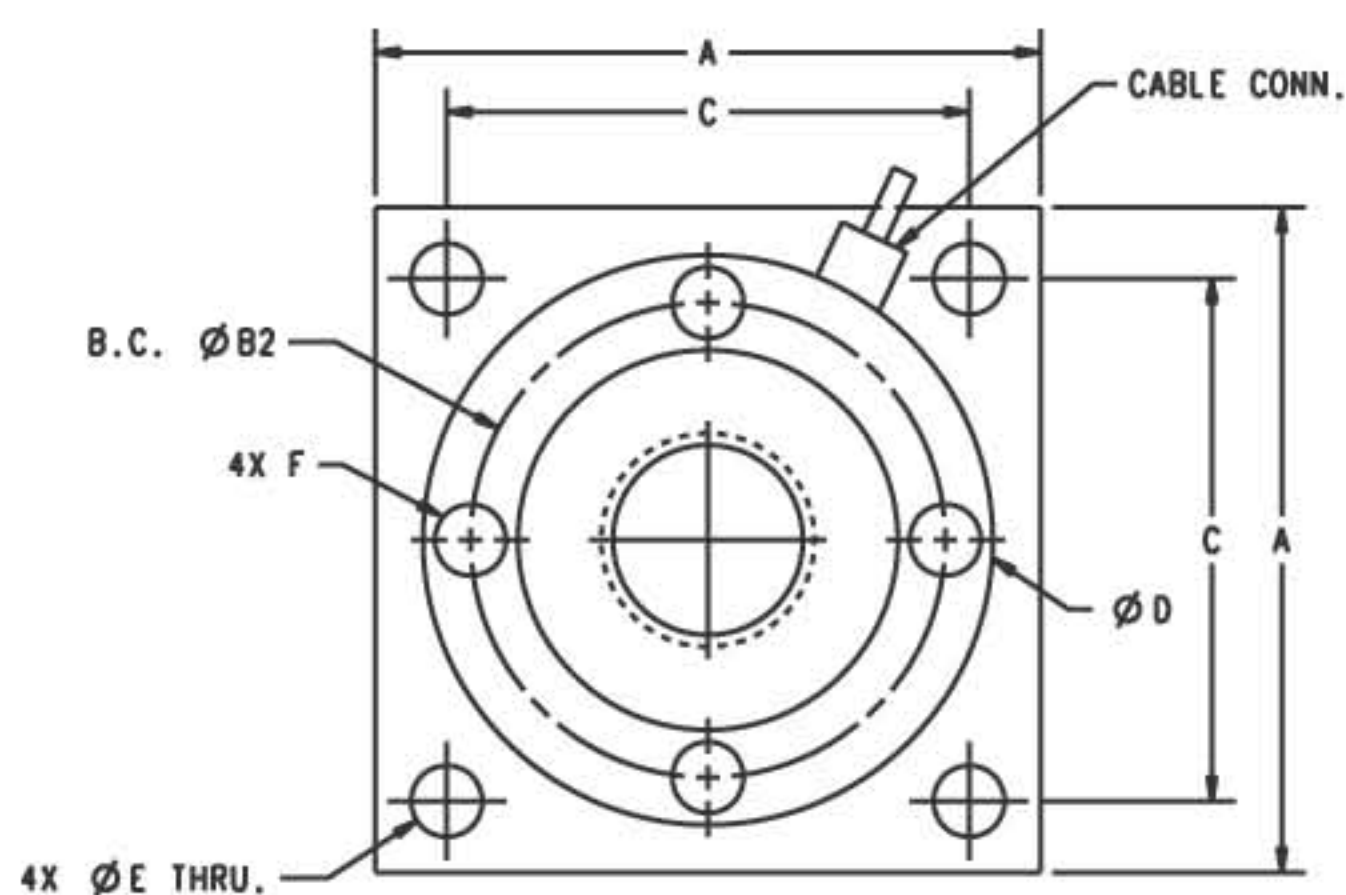


Assembly with integral RL9000 TWM compression disk load cell. See next page for load cell specifications.



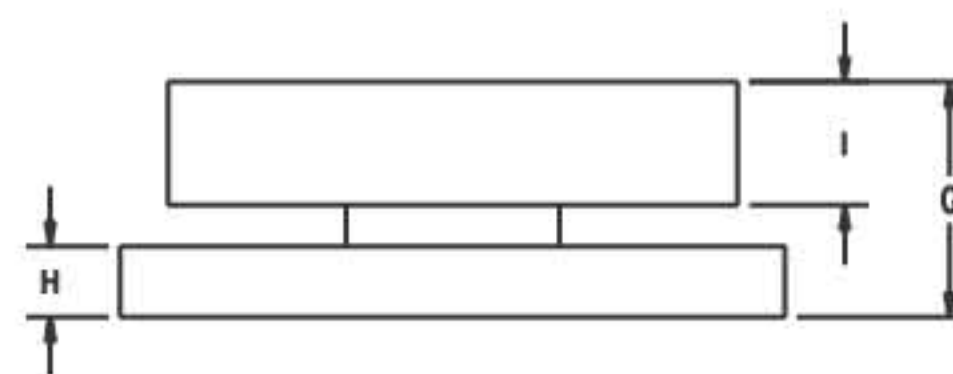
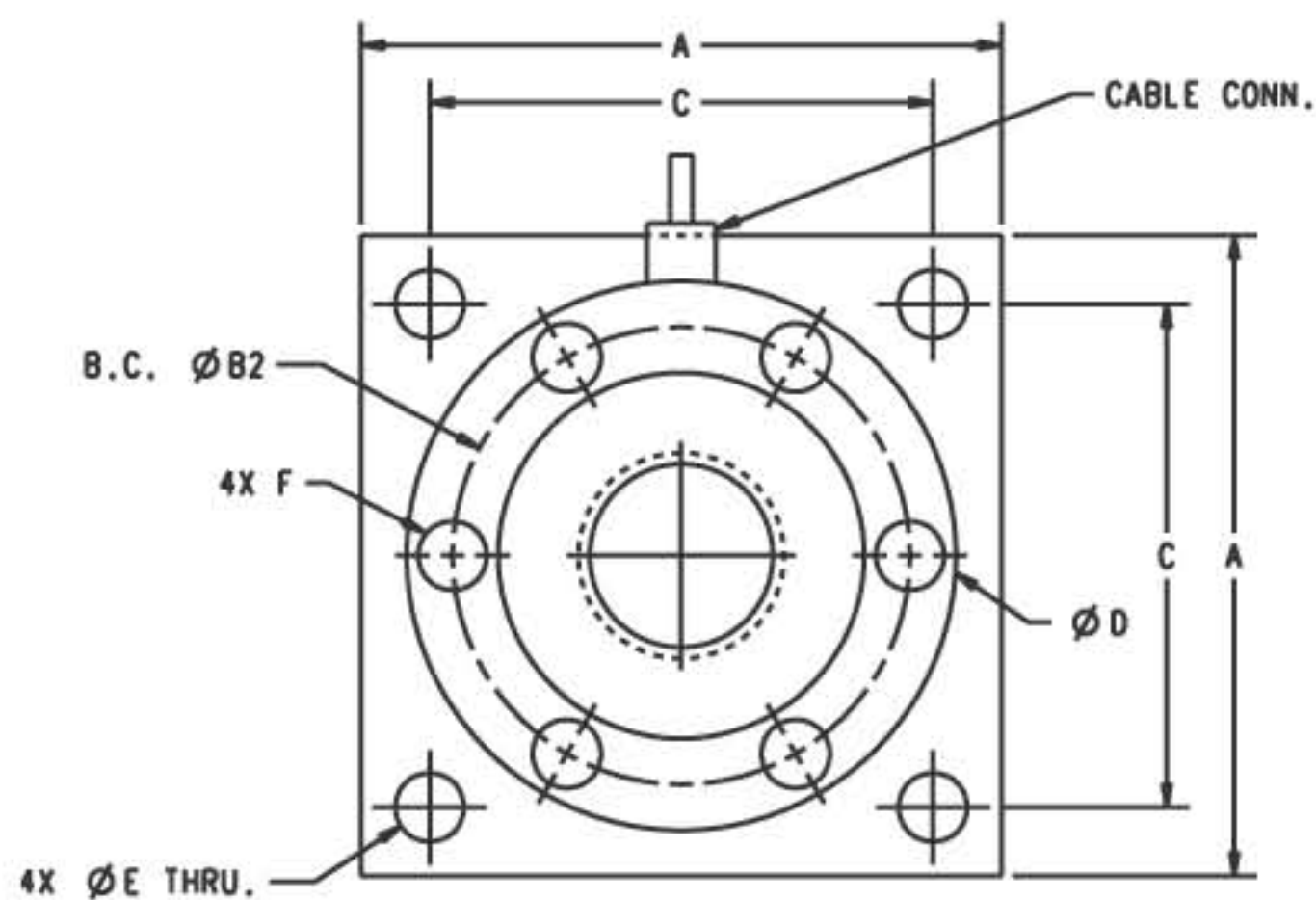

**DIMENSIONS (INCHES)**

Rated Capacity	A	B1	C	D	E	F	G	H	I	Conduit Adapter
1K-10K	4.0	2.0	3.25	3.5	0.4	3/8-16	1.35	.375	.75	N/A
15K	4.0	2.0	3.25	3.5	0.4	3/8-16	1.60	.625	.75	N/A
20K-50K	7.0	3.75	5.50	6.0	.63	1/2-13	2.48	.75	1.3	1/2-14 NPT
60K-100K	8.0	4.25	6.50	7.0	.81	3/4-16	2.50	1.0	1.3	1/2-14 NPT


**DIMENSIONS (INCHES)**

Rated Capacity	A	B2	C	D	E	F	G	H	I	Conduit Adapter
150K-200K	10.0	7.825	8.0	9.0	1.1	1-14	4.75	2.0	1.7	1/2-14 NPT

# RL9000 TWM Series Dimensions



## DIMENSIONS (INCHES)

Rated Capacity	A	B2	C	D	E	F	G	H	I	Conduit Adapter
250K-450K	11.0	7.75	9.0	9.0	1.3	7/8-14	6.42	3.0	2.25	1/2-14 NPT